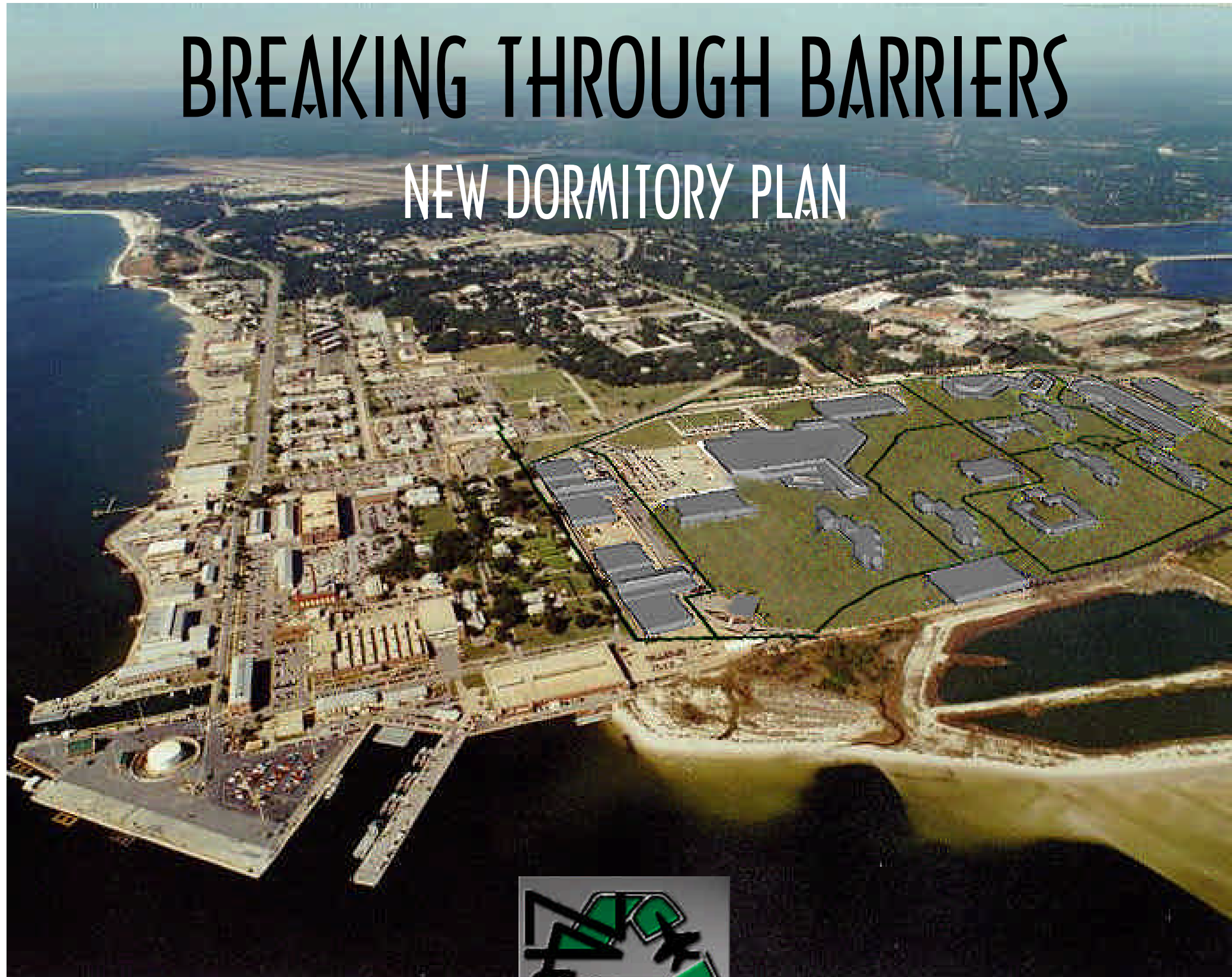
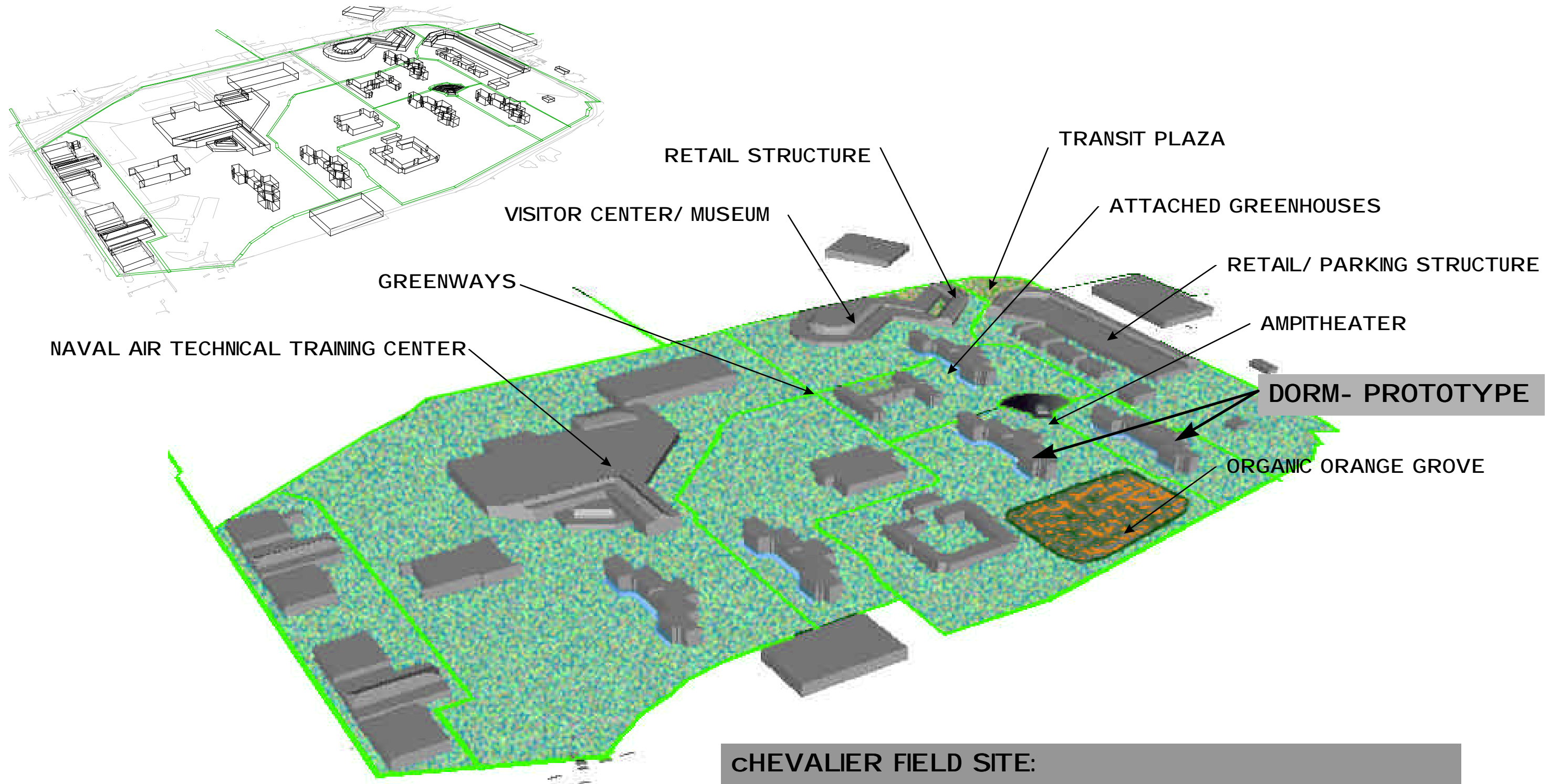


BREAKING THROUGH BARRIERS

NEW DORMITORY PLAN

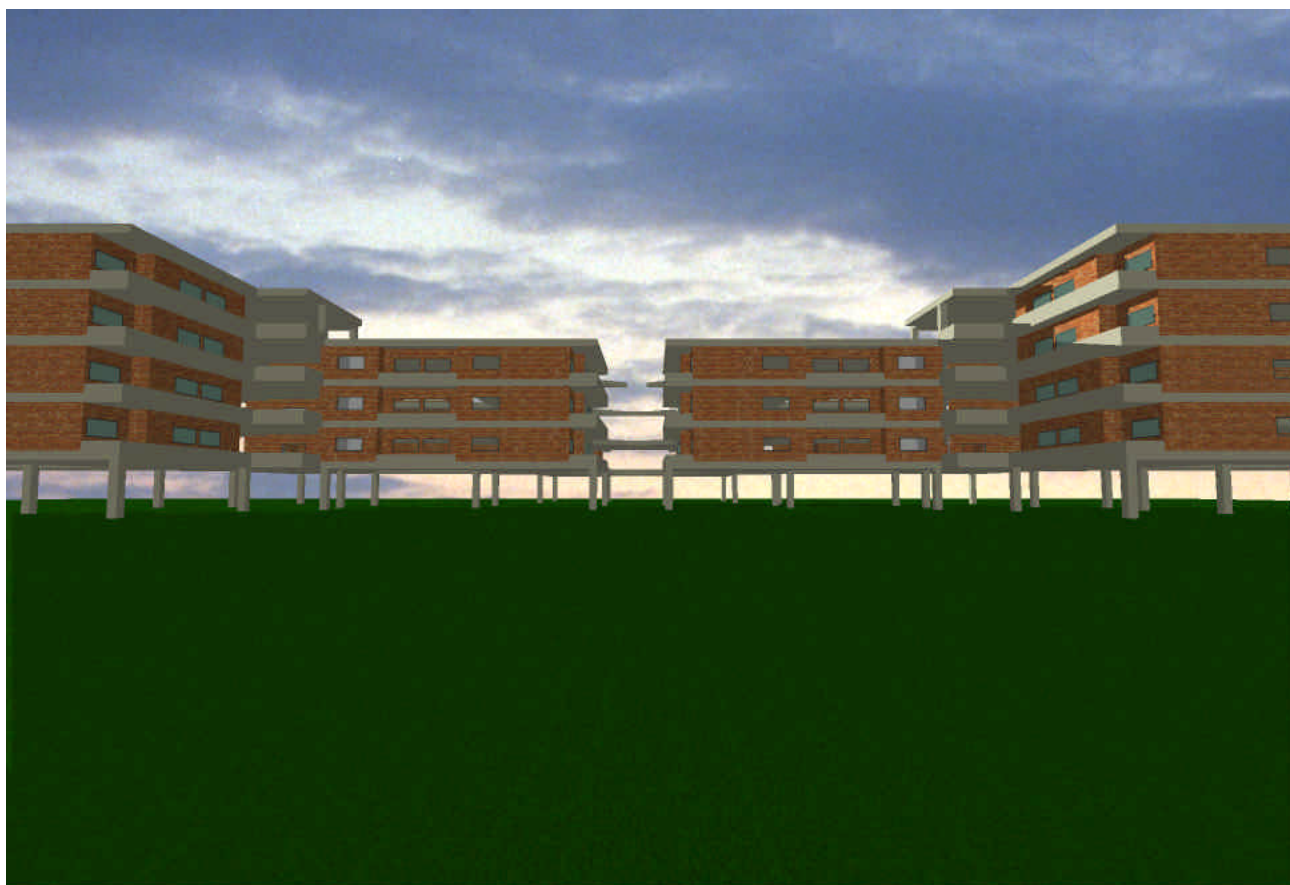
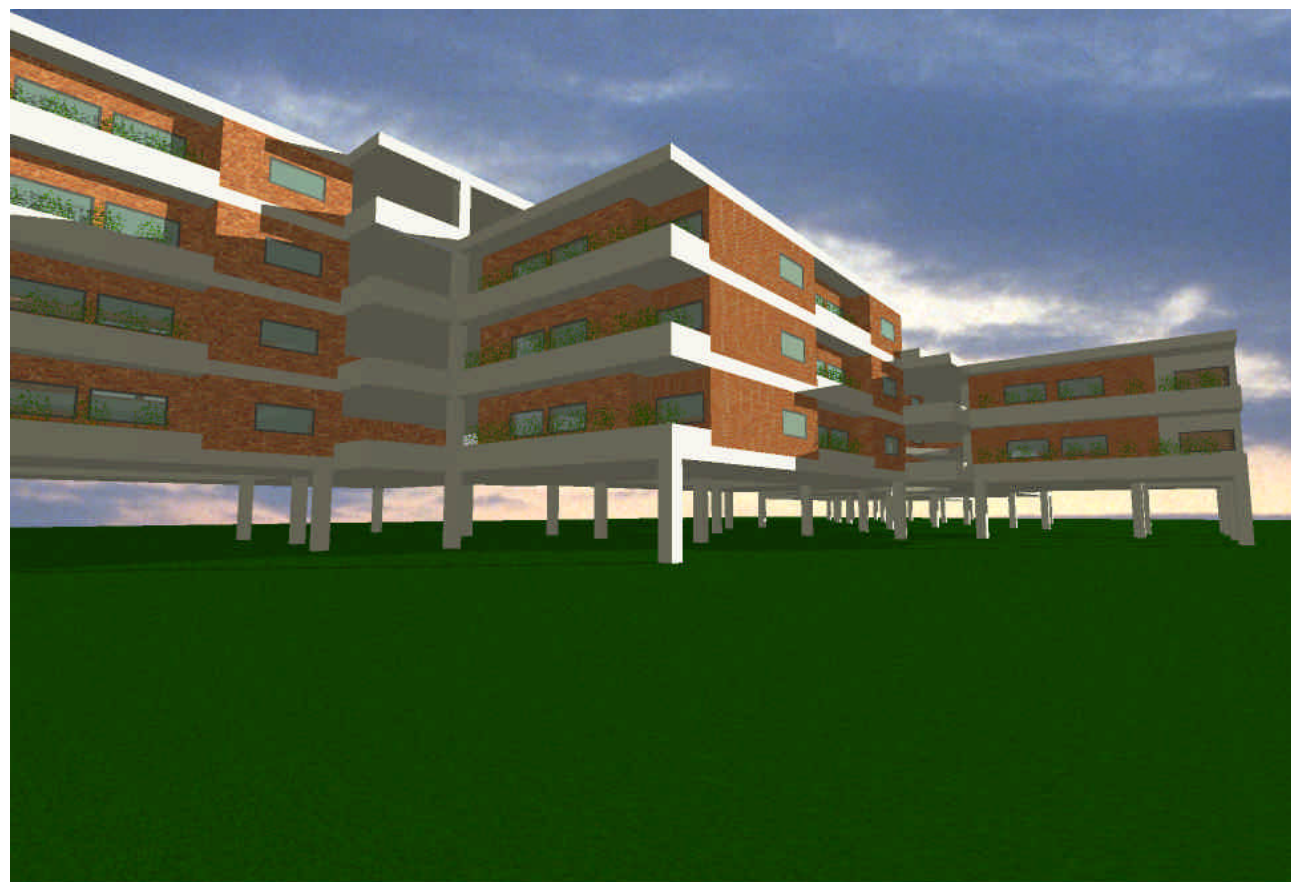




CHEVALIER FIELD SITE:

- REUSE OF FORMER AIRSTRIP & HELICOPTER CENTER
- CAMPUS LIKE/ COMMUNITY FEEL
- INTEGRATION INTO GREENWAY SYSTEM
- REFLECTED IN DORMITORY BUILDING- PART OF GREENWAY FABRIC

V
I
S
U
A
L
I
Z
A
T
I
O
N



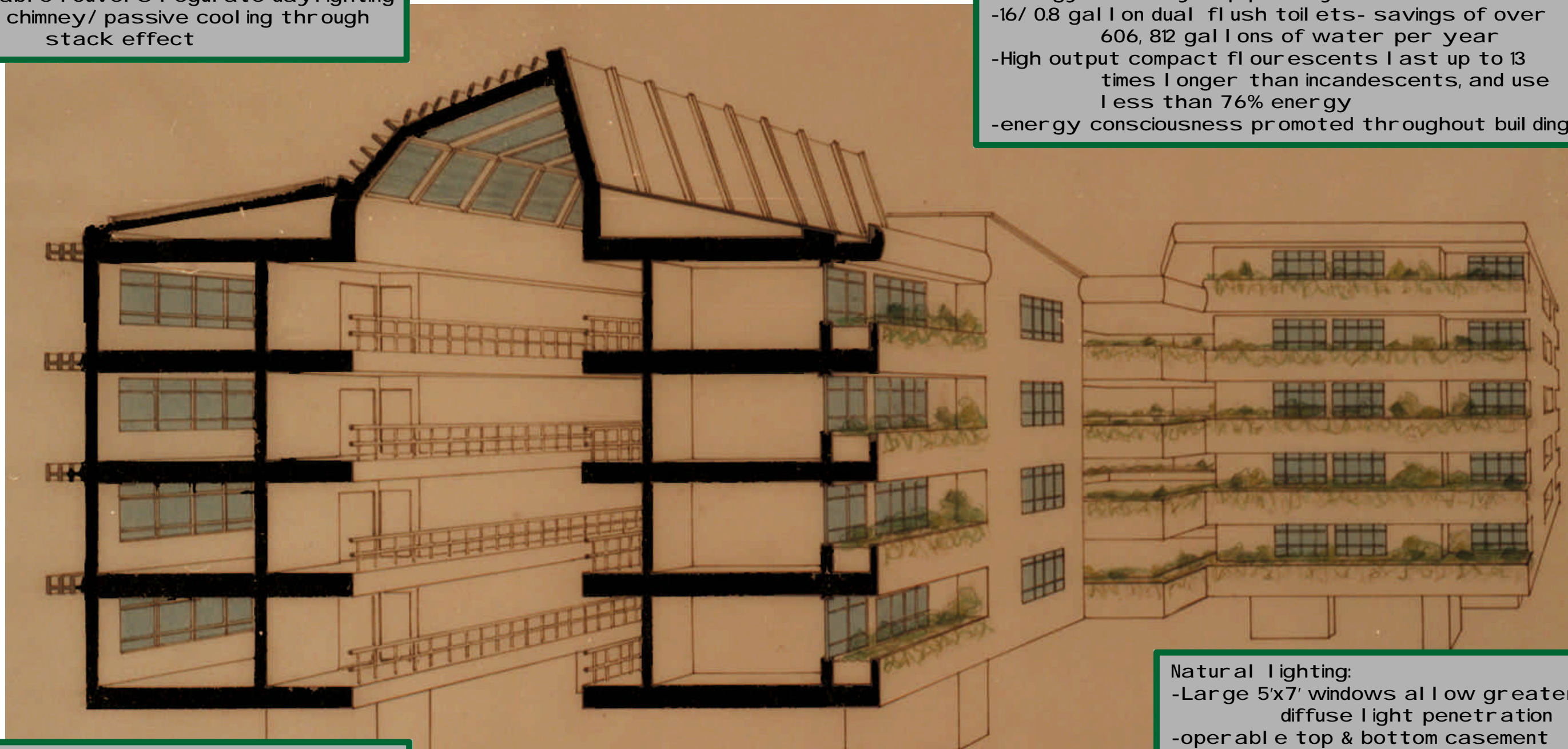
SECTION

Atrium:

- Allowing light to penetrate building
- operable louvers regulate daylighting
- heat chimney/ passive cooling through stack effect

Fixtures:

- energy efficiency top priority in selection
- 16/0.8 gallon dual flush toilets- savings of over 606,812 gallons of water per year
- High output compact fluorescents last up to 13 times longer than incandescents, and use less than 76% energy
- energy consciousness promoted throughout building



Ground floor:

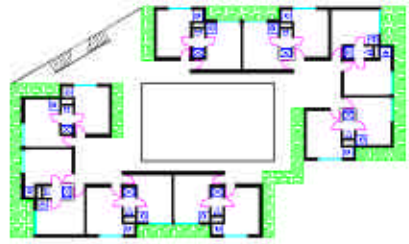
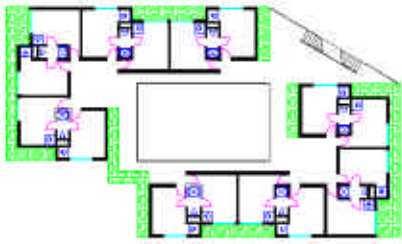
- Building removed from ground plane
- Avoiding fragmentation of landscape
- integration into greenway system
- mixed use nature- community services, laundry, dining, limited retail, attached greenhouses

Earth Pockets:

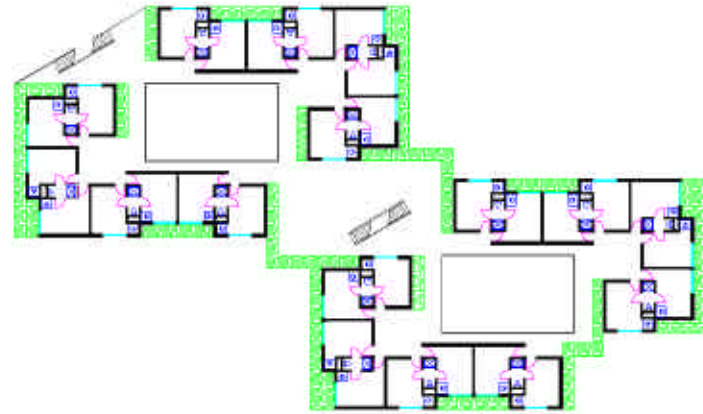
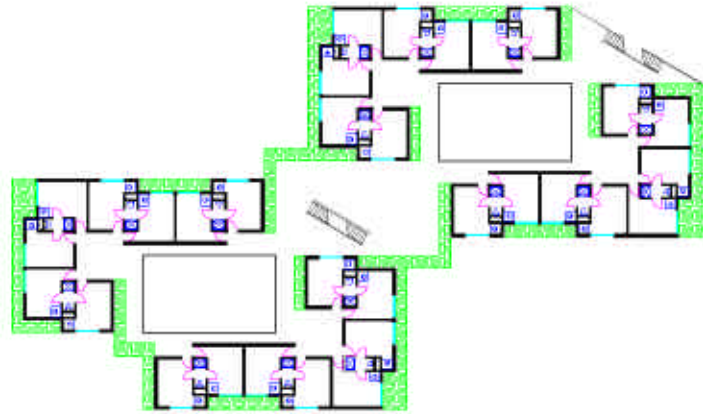
- "earth sheltered" structure
- soil beds planters as regulating pockets against building
- Keeps building mass cool in summer months
- shading strategy
- plants- evaporative cooling of air

Natural Lighting:

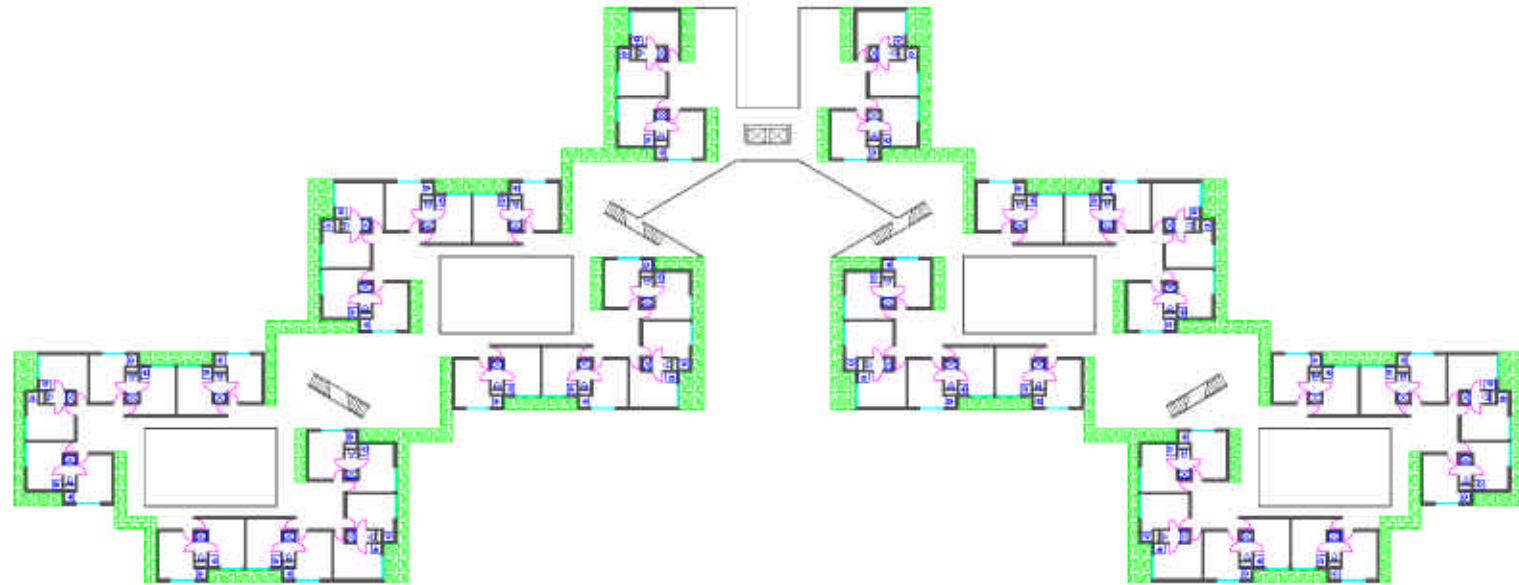
- Large 5'x7' windows allow greater diffuse light penetration
- operable top & bottom casement panels maximizes air flow



Sixth FLOOR



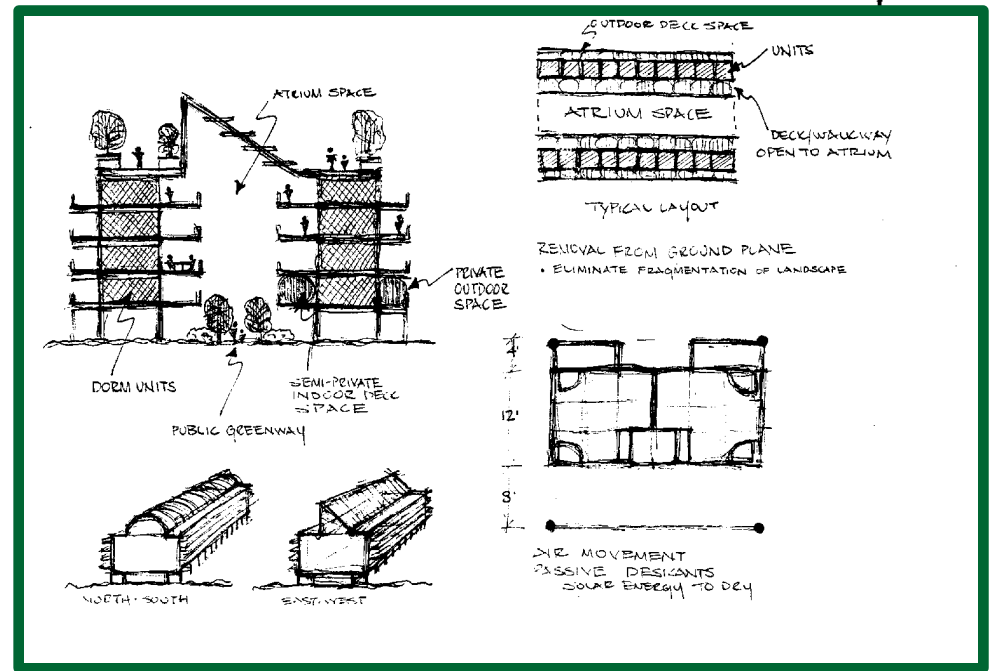
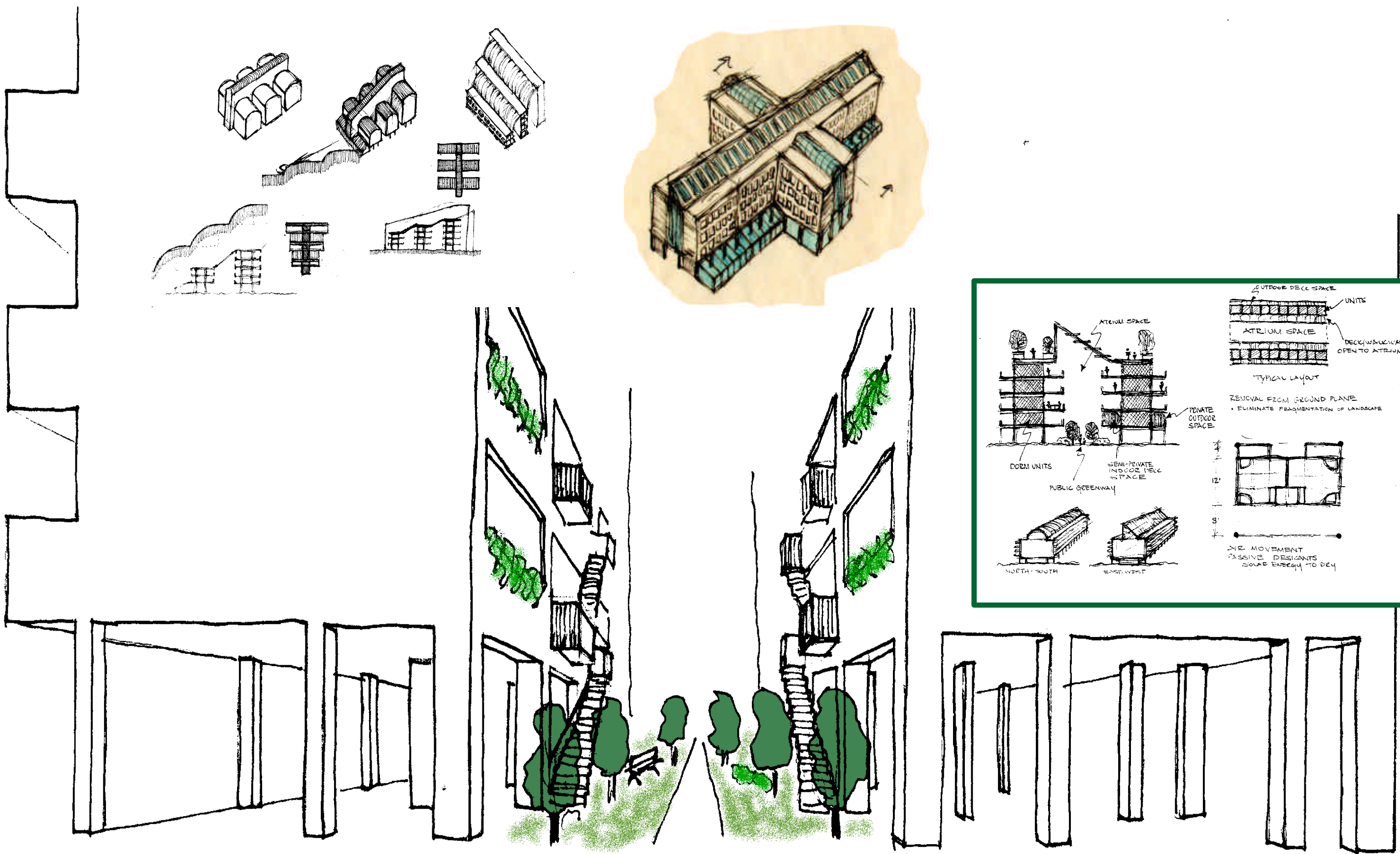
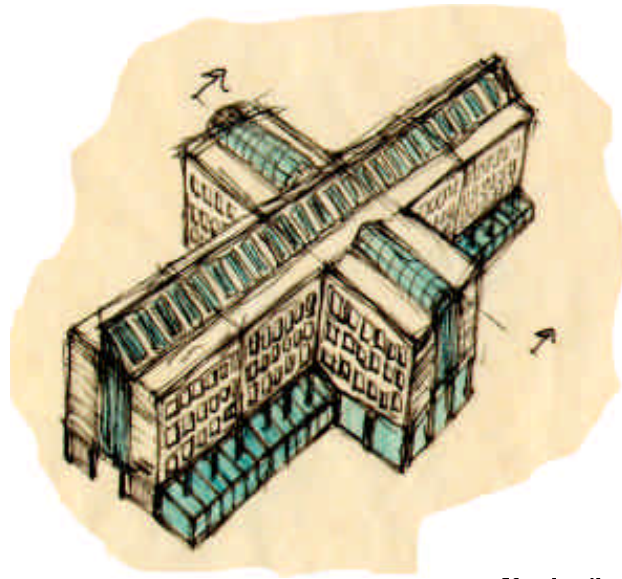
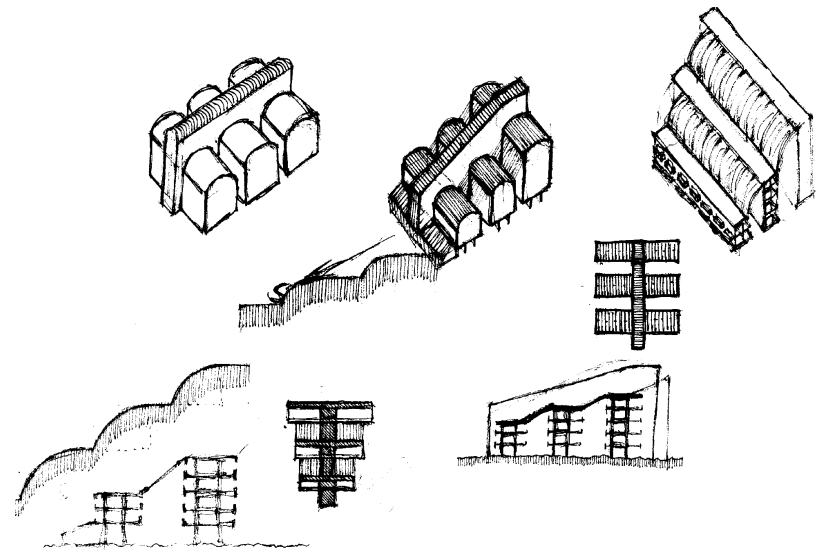
FIFTH FLOOR



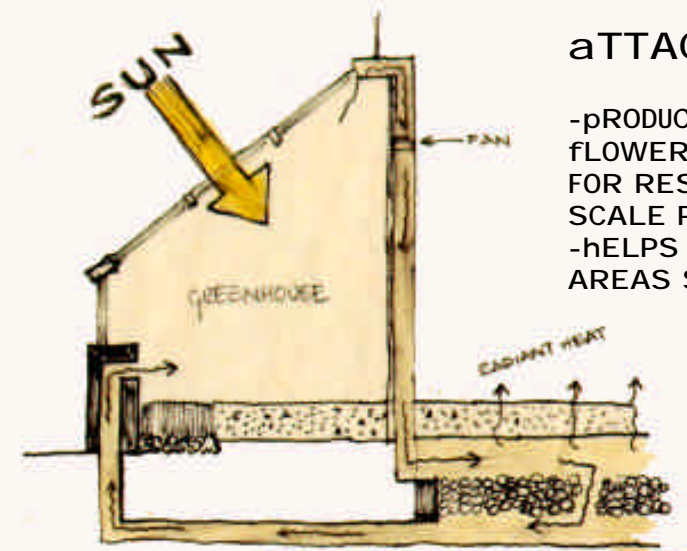
SECOND THRU FOURTH FLOOR



CONCEPTUAL



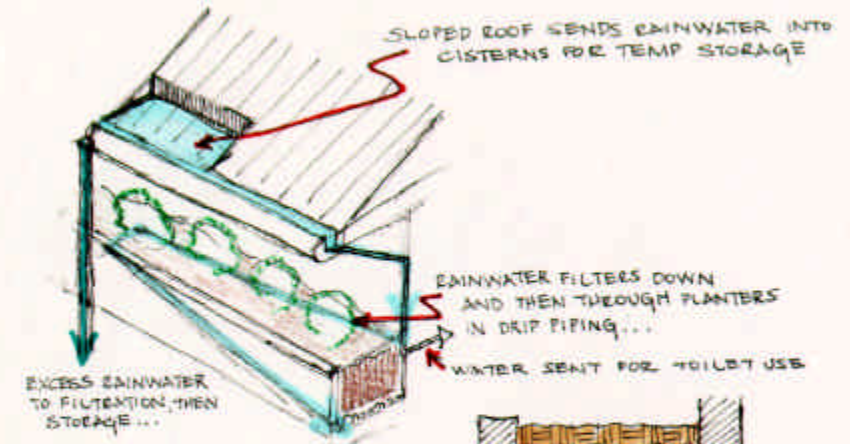
ATTACHED GREENHOUSES



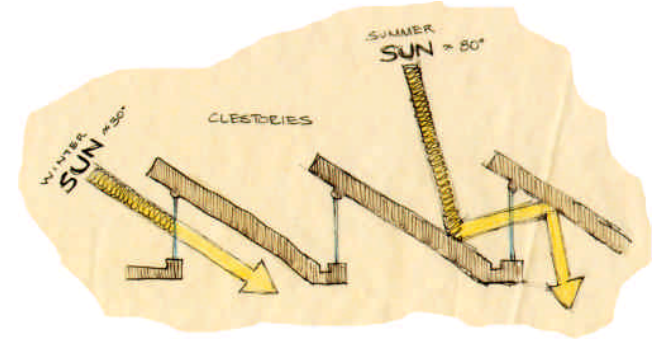
-pRODUCTION OF VEGETABLES, HERBS, FLOWERS, AND LANDSCAPING PLANTS FOR REST OF THE BASE- LARGE SCALE PRODUCTION
 -hELPS HEAT ADJACENT CLOSED AREAS SUCH AS DINING/ LAUNDRY

FAN FORCED ROCK BED STORAGE for WINTER DAY/NIGHT HEATING IN COLDER TIMES GREENHOUSE RECEIVES STORED HEAT FROM BLDG.

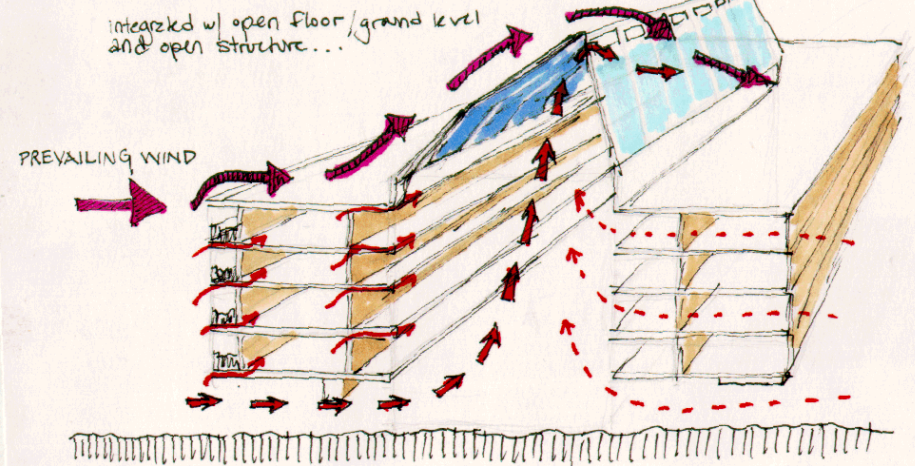
RAINWATER COLLECTION



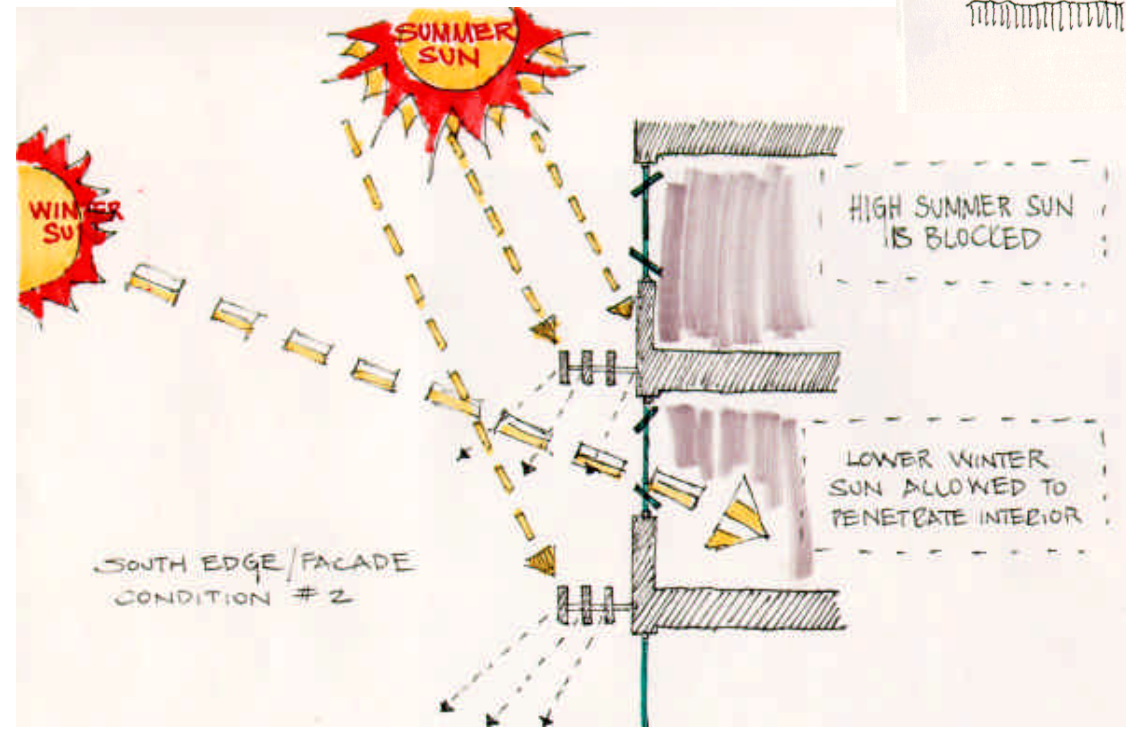
ONCE WATER HAS FILTERED THROUGH NUMEROUS PLANTERS IT CAN THEN BE USED FOR SHOWERS AND OTHER NON-DEINABLE USES...



passive cooling tower strategy

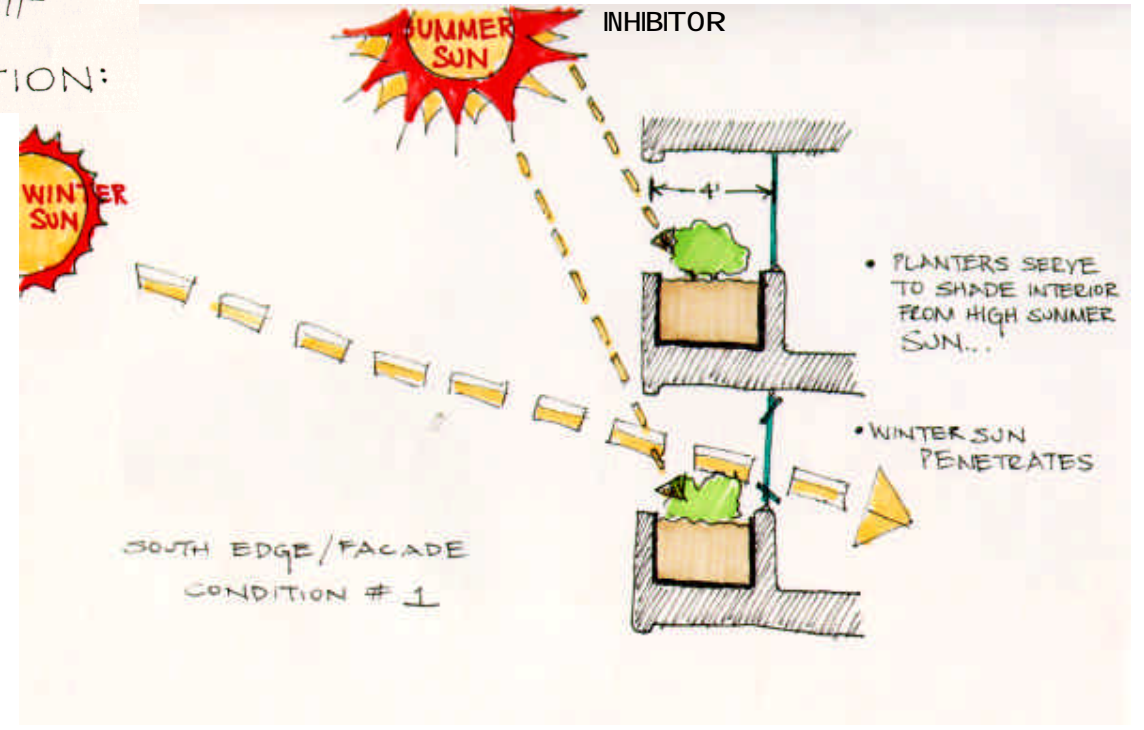
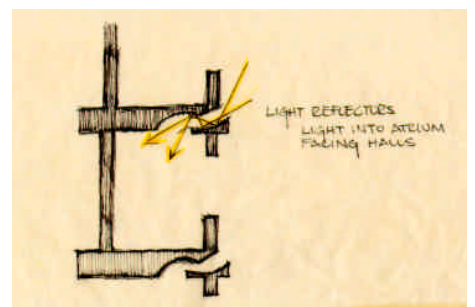


CONCRETE SLAB
 -sTEEL PANS FORM AIR PASSAGES THROUGH SLAB
 -FACILITATES NIGHTTIME FLUSHING OF HEAT
 -COATED WITH ECO- FRIENDLY FUNGI INHIBITOR



VENTILATION:

ventilation
 -PASSIVE COOLING STRATEGY
 -STACK EFFECT PULLS AIR UP THROUGH ATRIUM SPACES
 -WARM AIR VENTS OUT TOP OF ATRIUM



Plants are chosen and located by each individual vine's ability to tolerate shade or sun. All plants will get approximately the same amount of water by a drip irrigation system filtering water from a rooftop rainwater collection unit, down through the soil beds.

